



样品承认书

客户: _____

品名: 58*164 共阴黄白色彩屏

规格: UL-16458AWY-A058-006-420

编号: 2017-07

客户签字栏		
核准	审核	承认

本公司签字栏		
核准	审核	制作

地址: 广东省中山市南区昌盛路4号

电话: 0760-23886633 23886636 23886632

传真: 0760-23886658

网址: www.jlul.com

电子邮箱: jinglei@jlul.com



中山市晶艺光电科技有限公司

ZHONGSHAN JEWELRY OPTOELECTRONIC TECHNOLOGY CO.,LTD.

PART NO.:UL-16458AWY-A058-006-420

ELECTRICAL AND OPTICAL CHARACTERISTICS(Ta=25°C)

Chip		Lens Appearance	Absolute Maximum				Electro-optical Data(AT20mA)			
Emitted	Peak Wave Length		$\Delta \lambda$ (nm)	Pd (mW)	If (mA)	Peak (mA)	Vf (V)			IV (mcd)
							Min	Mean	Max	Typ.
Yellow	588-590	White Diff.	20	80	20	100	1.7	2.0	2.5	73-88

ELECTRICAL AND OPTICAL CHARACTERISTICS(Ta=25°C)

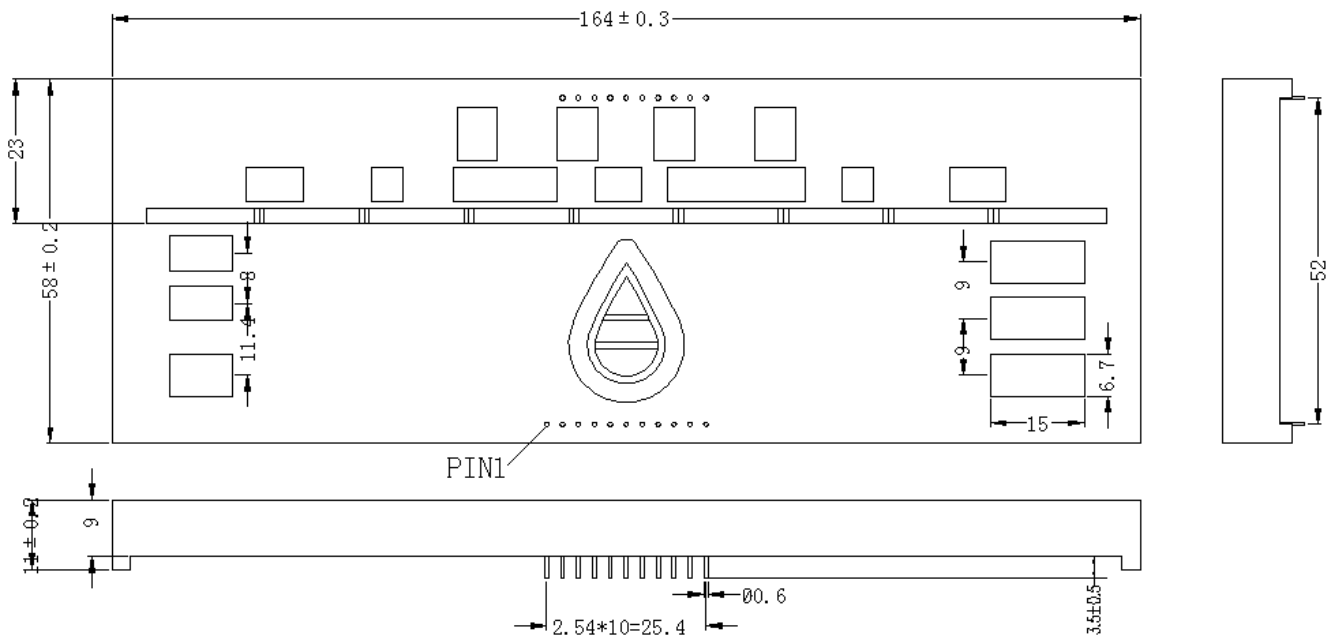
Parameter	Symbol	Min	Typ	Max	Unit	Test Condition
Wave Length	λ_P	---	---	---	nm	IF=20mA(Note1)
Chromaticity	X	---	0.246	---	---	IF=20mA
Coordinates	Y		0.267	---		IF=20mA
Luminous Intensity	ϕ	---	2.2	---	LM	IF=20mA
Viewing Angle	$2\theta_{1/2}$	--	----	--	Deg	IF=20mA
Forward voltage	VF	2.8	3.0	3.8	V	IF=20mA

Remark: Viewing angle is the Off-axis angle at which the luminous intensity is half the axial luminous intensity.

ABSOLUTE MAXIMUM RATINGS(Ta=25°C)

- Reverse Voltage.....5V
- Reverse Current($V_R=5V$).....20 μA
- Operating Temperature Range.....-25°C~+80°C
- Storage Temperature Range.....-30°C~+80°C
- Lead Soldering Temperature.....260°C For 5 Seconds

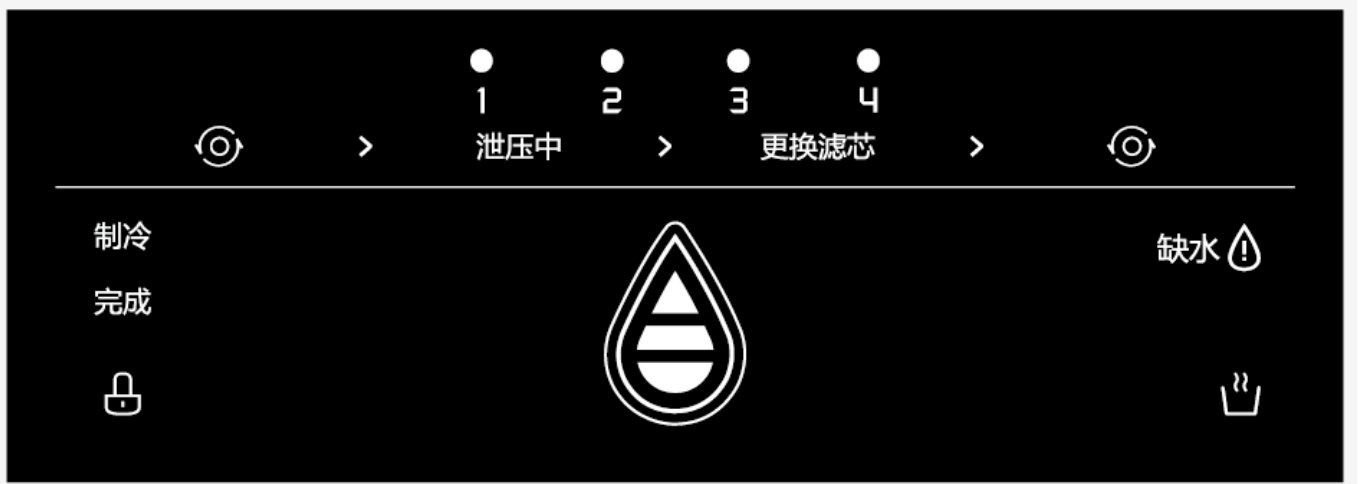
PACKAGE DIMENSION:



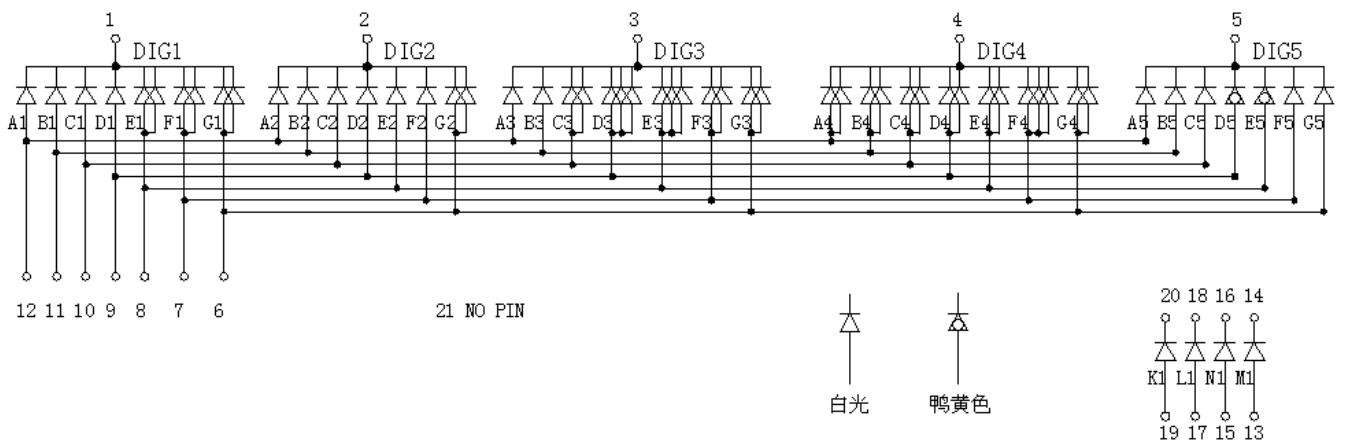
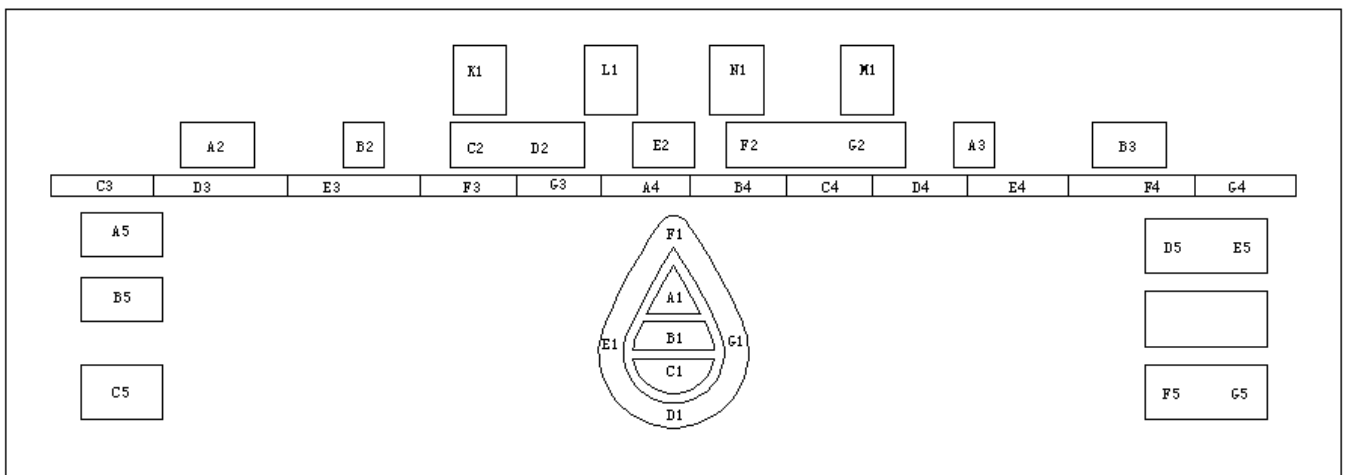


PART NO.: UL-16458AWY-A058-006-420

PACKAGE DIMENSION:



Y-C16458-420



未标注尺寸公差±0.2mm

客户名称:

工程确认:

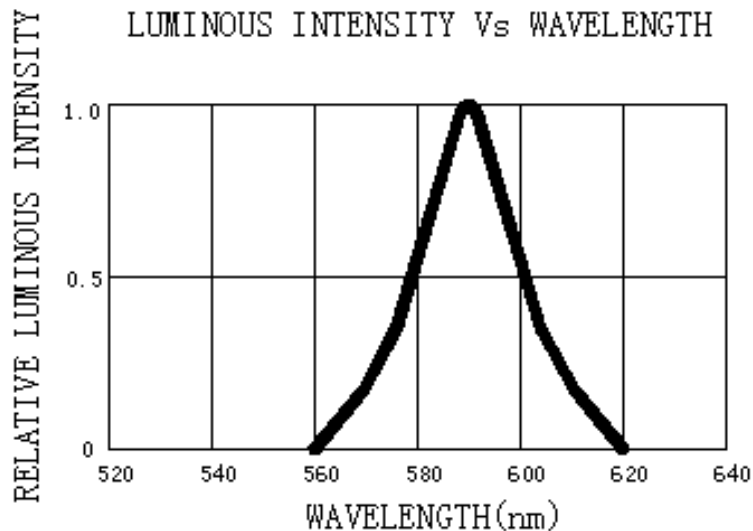
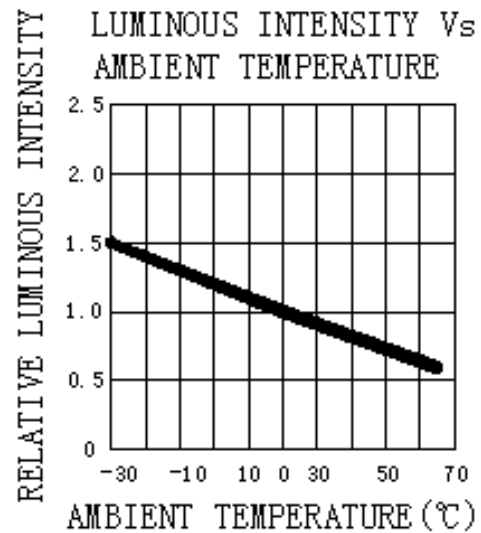
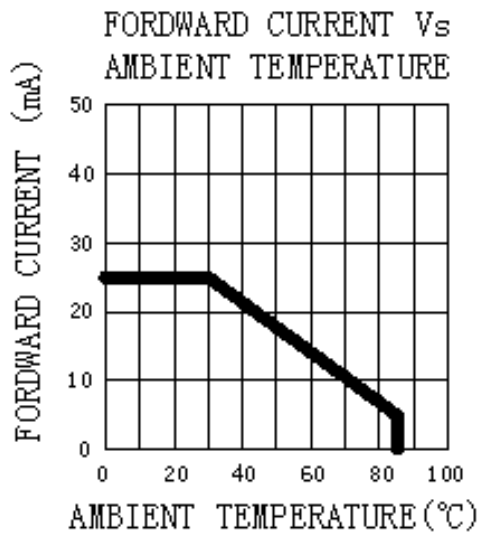
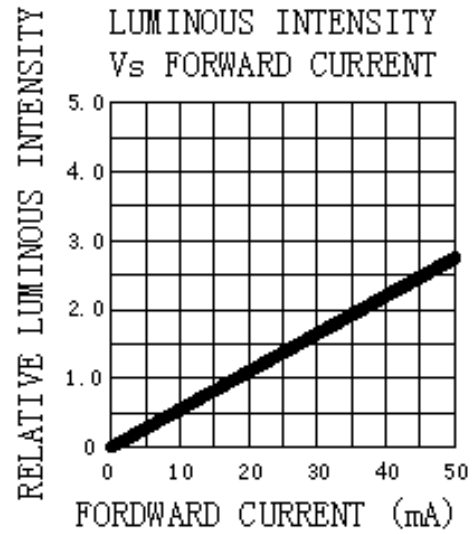
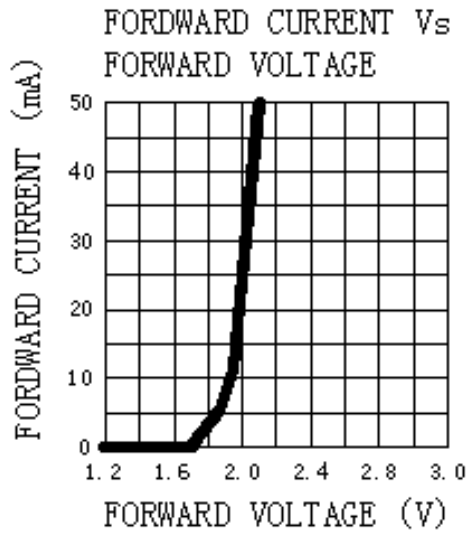
日期:



PART NO.: UL-16458AWY-A058-006-420

TYPICAL ELECTRO-OPTICAL CHARACTERISTICS CURVE:

Yellow:





PART NO.: UL-16458AWY-A058-006-420

TYPICAL ELECTRO-OPTICAL CHARACTERISTICS CURVE:

White:

