



中山市晶艺光电科技有限公司  
ZHONGSHAN JEWELLY OPTOELECTRONIC TECHNOLOGY CO.,LTD.

# 样品承认书

客户：\_\_\_\_\_

品名： 58\*164 共阴黄白色彩屏

规格： UL-16458AWY-A059-006-530

编号： 2017-07

客户签字栏		
核准	审核	承认

本公司签字栏		
核准	审核	制作

地址：广东省中山市南区昌盛路4号

电话：0760-23886633 23886636 23886632

传真：0760-23886658

网址：[www.jlul.com](http://www.jlul.com)

电子邮箱：[jinglei@jlul.com](mailto:jinglei@jlul.com)



# 中山市晶艺光电科技有限公司

## ZHONGSHAN JEWELRY OPTOELECTRONIC TECHNOLOGY CO.,LTD.

PART NO.:UL-16458AWY-A059-006-530

### ELECTRICAL AND OPTICAL CHARACTERISTICS(Ta=25°C)

Chip		Lens Appearance	Absolute Maximum				Electro-optical Data(AT20mA)			
Emitted	Peak Wave Length		$\Delta \lambda$ (nm)	Pd (mW)	If (mA)	Peak (mA)	Vf (V)			IV (mcd)
							Min	Mean	Max	Typ.
Yellow	588-590	White Diff.	20	80	20	100	1.7	2.0	2.5	73-88

### ELECTRICAL AND OPTICAL CHARACTERISTICS(Ta=25°C)

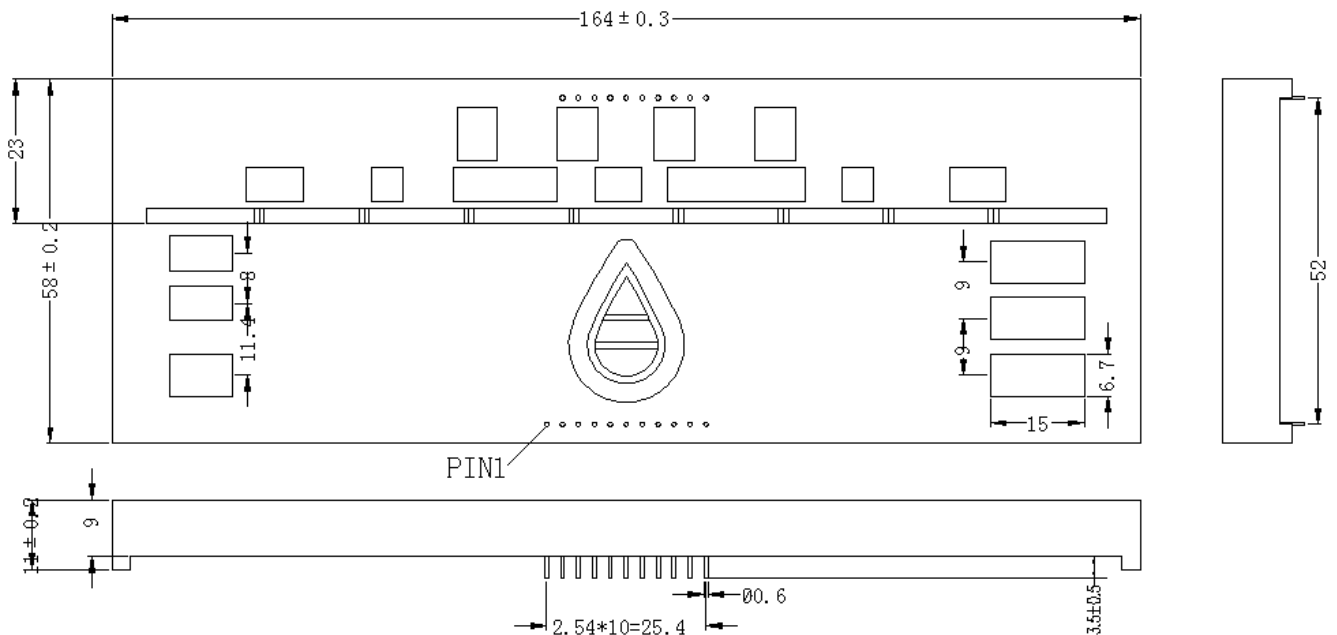
Parameter	Symbol	Min	Typ	Max	Unit	Test Condition
Wave Length	$\lambda P$	---	---	---	nm	IF=20mA(Note1)
<b>Chromaticity</b>	X	---	0.246	---	---	IF=20mA
<b>Coordinates</b>	Y		0.267	---		IF=20mA
Luminous Intensity	$\phi$	---	2.2	---	LM	IF=20mA
Viewing Angle	$2 \theta 1/2$	--	----	--	Deg	IF=20mA
Forward voltage	VF	2.8	3.0	3.8	V	IF=20mA

Remark: Viewing angle is the Off-axis angle at which the luminous intensity is half the axial luminous intensity.

### ABSOLUTE MAXIMUN RATINGS(Ta=25°C)

- Reverse Voltage.....5V
- Reverse Current( $V_R=5V$ ).....20  $\mu A$
- Operating Temperature Range.....-25°C~+80°C
- Storage Temperature Range.....-30°C~+80°C
- Lead Soldering Temperature.....260°C For 5 Seconds

### PACKAGE DIMENSION:





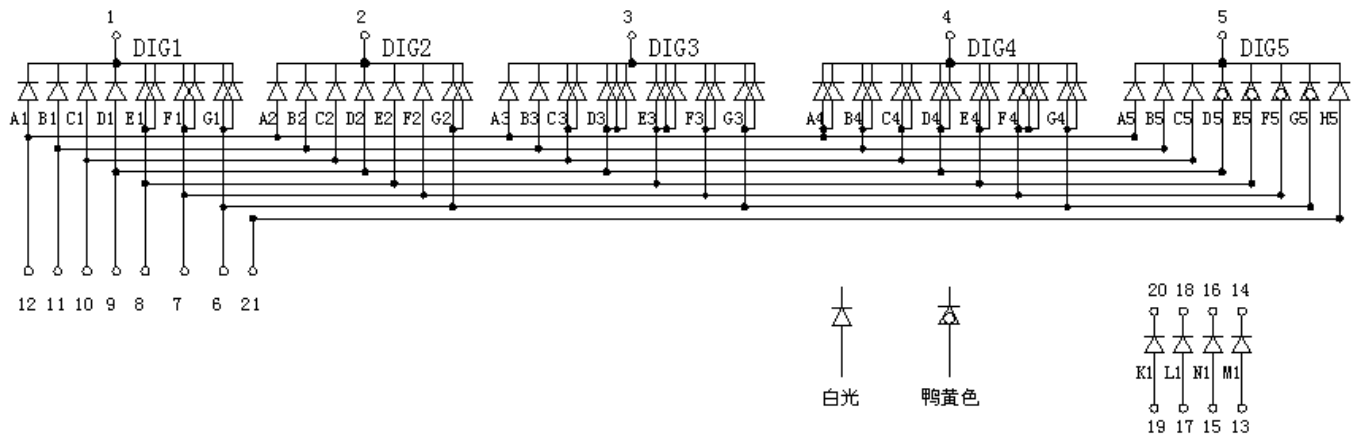
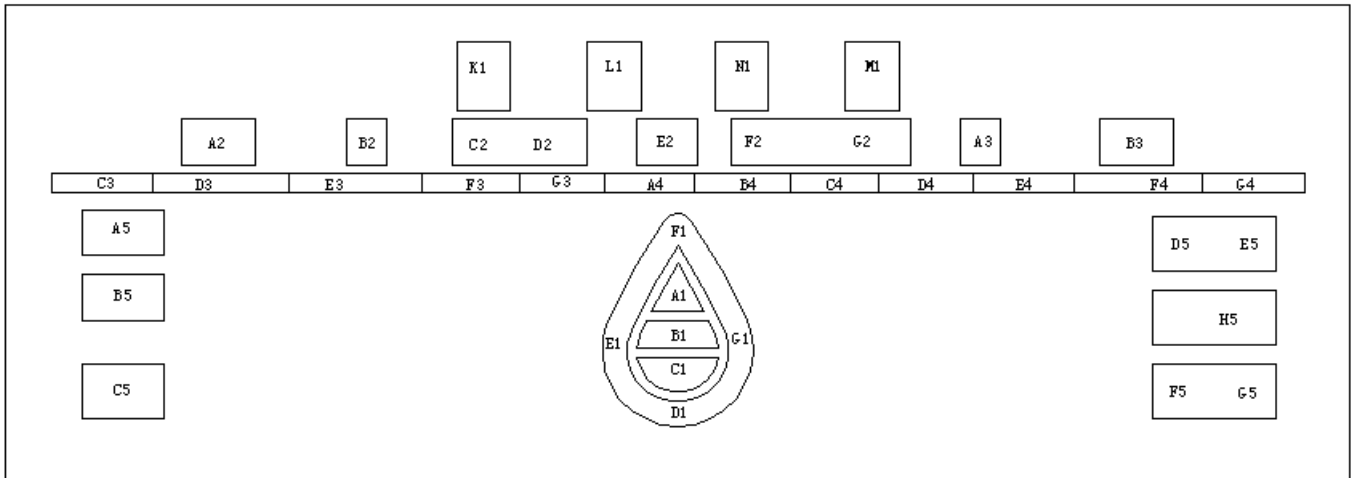
中山市晶艺光电科技有限公司  
ZHONGSHAN JEWELLY OPTOELECTRONIC TECHNOLOGY CO.,LTD.

PART NO.:UL-16458AWY-A059-006-530

PACKAGE DIMENSION:



Y-C16458-530



未标注尺寸公差±0.2mm

客户名称:

工程确认:

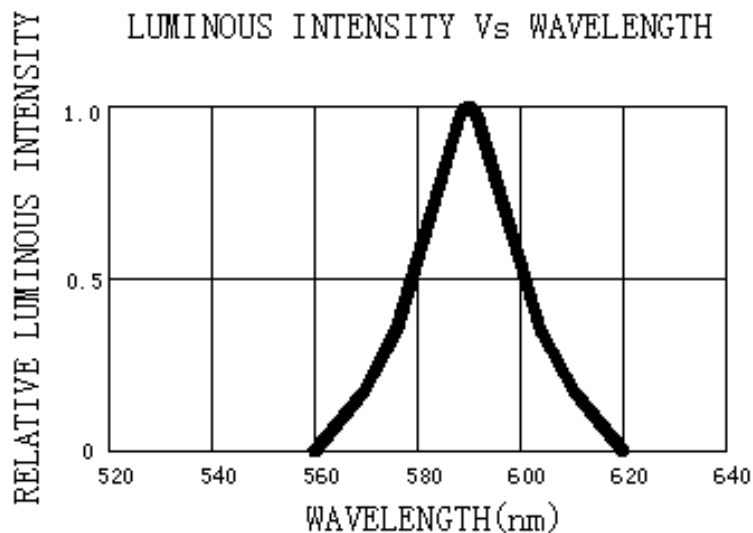
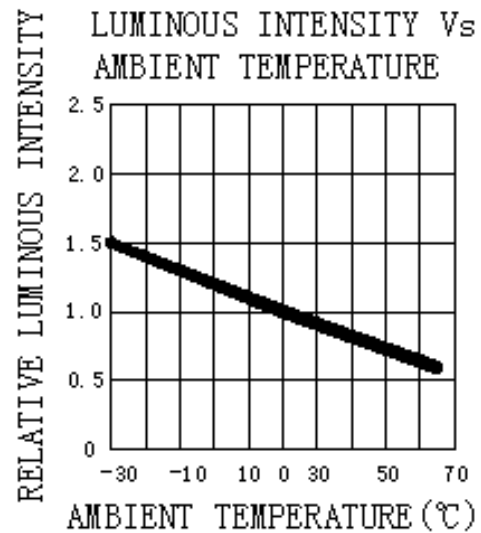
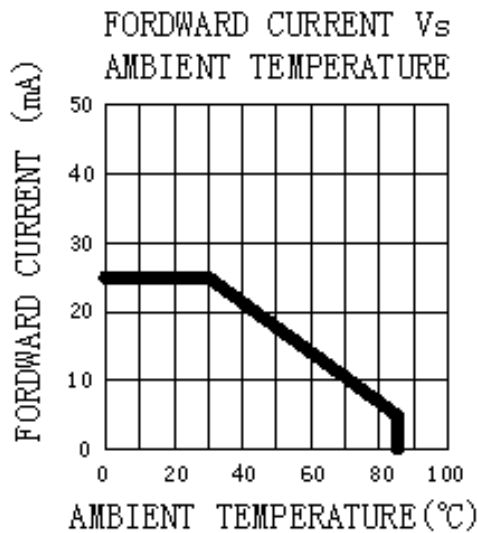
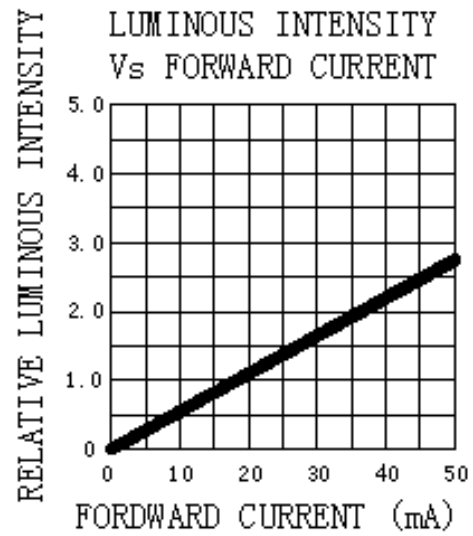
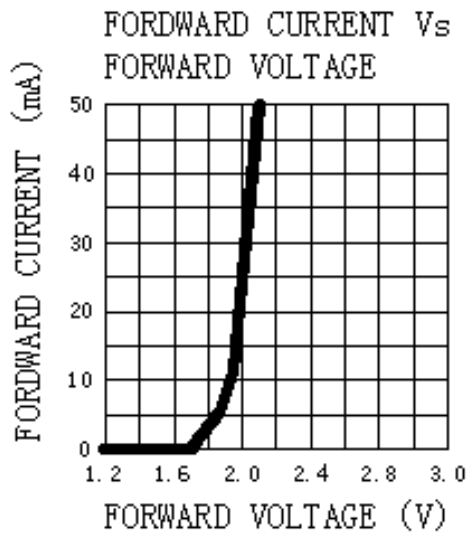
日期:



PART NO.: UL-16458AWY-A059-006-530

TYPICAL ELECTRO-OPTICAL CHARACTERISTICS CURVE:

Yellow:





PART NO.: UL-16458AWY-A059-006-530

TYPICAL ELECTRO-OPTICAL CHARACTERISTICS CURVE:

White:

