



中山市晶艺光电科技有限公司
ZHONGSHAN JEWELLY OPTOELECTRONIC TECHNOLOGY CO.,LTD.

样品承认书

品名: 7*20 黄色平面管

规格: UL-0720CY

编号: 2017-07

客户签字栏		
核准	审核	承认

本公司签字栏		
核准	审核	制作

地址: 广东省中山市南区昌盛路4号

电话: 0760-23886633 23886636 23886632

传真: 0760-23886658

网址: www.jlul.com

电子邮箱: jinglei@jlul.com



中山市晶艺光电科技有限公司

ZHONGSHAN JEWELLY OPTOELECTRONIC TECHNOLOGY CO.,LTD.

PART NO.: UL-0720CY

ELECTRICAL AND OPTICAL CHARACTERISTICS(Ta=25°C)

Chip		Lens Appearance	Absolute Maximum				Electro-optical Data(AT20mA)			
Emitted	Peak Wave Length		$\Delta \lambda$ (nm)	Pd (mW)	If (mA)	Peak (mA)	Vf (V)			IV (mcd)
							Min	Mean	Max	Typ.
Yellow	586-589	White Diff.	20	35	20	60	1.7	2.0	2.5	100-115

Remark:Viewing angle is the Off-axis angle at which the luminous intensity is half the axial luminous intensity.

ABSOLUTE MAXIMUM RATINGS(Ta=25°C)

Reverse Voltage.....5V

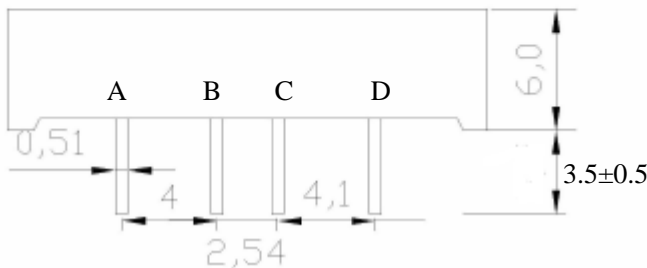
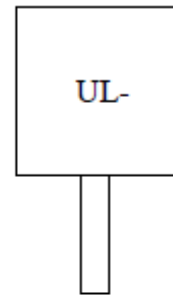
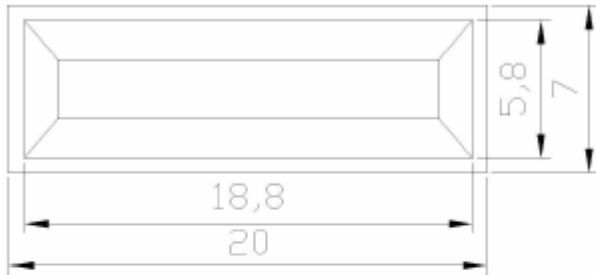
Reverse Current($V_R=5V$).....20 μ A

Operating Temperature Range.....-25°C~+80°C

Storage Temperature Range.....-30°C~+80°C

Lead Soldering Temperature..... 260°C For 5 Seconds

PACKAGE DIMENSION:



尺寸公差为: $\pm 0.2\text{mm}$

客户名称:

工程确认:

日期



中山市晶艺光电科技有限公司

ZHONGSHAN JEWELRY OPTOELECTRONIC TECHNOLOGY CO.,LTD.

PART NO.: UL-0720CY

TYPICAL ELECTRO-OPTICAL CHARACTERISTICS CURVE:

