



# 样品承认书

品 名： Φ18 平面管白色（偏蓝）

规 格： ULA-Φ18BW-2B

编 号： 2017-07

| 客户签字栏 |    |    |
|-------|----|----|
| 核准    | 审核 | 承认 |
|       |    |    |

| 本公司签字栏 |    |    |
|--------|----|----|
| 核准     | 审核 | 制作 |
|        |    |    |

地址：广东省中山市南区昌盛路4号

电话：0760-3886633 3886636 3886632

传真：0760-3886658

网址：www.jlul.com

电子邮箱：[jinglei@jlul.com](mailto:jinglei@jlul.com)



PART NO.: ULA-Φ18BW-2B

ELECTRICAL AND OPTICAL CHARACTERISTICS(Ta=25°C)

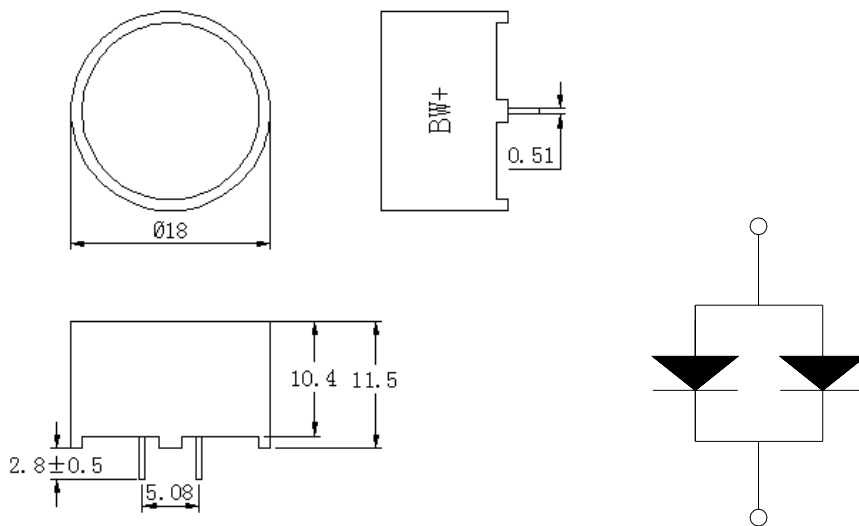
| Parameter                       | Symbol | Min    | Typ    | Max    | Unit | Test Condition |
|---------------------------------|--------|--------|--------|--------|------|----------------|
| <b>Chromaticity Coordinates</b> | X      | 0.2139 | 0.2373 | 0.2557 | ---  | IF=20mA        |
|                                 | Y      | 0.2081 | 0.2208 | 0.2383 |      | IF=20mA        |
| Luminous Intensity              | IV     | 106    | ---    | 127    | mcd  | IF=20mA        |
| Viewing Angle                   | 2θ 1/2 | --     | 120    | /      | Deg  | IF=20mA        |
| Forward voltage                 | VF     | 2.6    | 3.0    | 3.8    | V    | IF=20mA        |

Remark: Viewing angle is the Off-axis angle at which the luminous intensity is half the axial luminous intensity.

ABSOLUTE MAXIMUM RATINGS(Ta=25°C)

Reverse Voltage.....5V  
Reverse Current(V<sub>R</sub>=5V).....20 μ A  
Operating Temperature Range.....-25°C~+80°C  
Storage Temperature Range.....-30°C~+80°C  
Lead Soldering Temperature..... 260°C For 5 Seconds

PACKAGE DIMENSION:



未标注尺寸公差为±0.2

客户名称:

工程确认:

日期:



PART NO.: ULA-Φ18BW-2B

TYPICAL ELECTRO-OPTICAL CHARACTERISTICS CURVE:

