

The SP3 from Celasco is a compact, economical stringpot that provides a user selectable 4-20 mA or 0-10 Vdc output signal. Simply install this sensor using the handy mounting bracket and connect the appropriate wires for the desired output.

The SP3 is constructed with a rugged, water resistant polycarbonate body that has been compactly designed for tight spaces and generous measuring cable misalignment. With 4 different ranges, the SP3 is a perfect solution for many applications from light industrial to OEM. Just like all of our other SP and SE models, the SP3 is in stock ready to ship.

## SP3

### Compact String Pot • 4..20mA / 0..10Vdc

**Linear Position to 50 inches (1270 mm)**

**User Selectable Output: 4–20 mA or 0–10Vdc**

**40-in. Electrical Cable • Free-Release Tolerant**

**In Stock for Quick Delivery!**

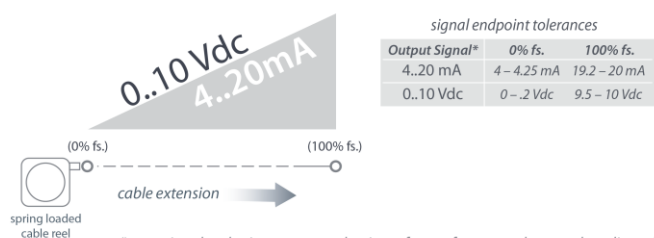
### Specifications

<b>Full Stroke Range Options</b>	0-4.75, 0-12.5, 0-25, 0-50 inches
<b>User Selectable Output Signal</b>	4...20 mA (2-wire) / 0...10 Vdc
<b>Input Voltage, 4...20 mA option</b>	8-40 VDC
<b>Input Voltage, 0...10 Vdc option</b>	12-32 VDC
<b>Accuracy</b>	±0.25 to ±1.00% (see part no. above)
<b>Repeatability</b>	± 0.05% full stroke
<b>Resolution</b>	essentially infinite
<b>Measuring Cable</b>	0.019-in. dia. nylon-coated stainless steel
<b>Measuring Cable Tension</b>	7 oz. (1.9 N) ±25%
<b>Maximum Cable Acceleration</b>	15 g
<b>Enclosure Material</b>	Polycarbonate
<b>Sensor</b>	plastic-hybrid precision potentiometer
<b>Weight</b>	5 oz. (w/o mounting bracket) max.

### Environmental

<b>Enclosure</b>	IP 50
<b>Operating Temperature</b>	0° to 160°F (-18° to 71°C)
<b>Vibration</b>	up to 10 g to 2000 Hz maximum

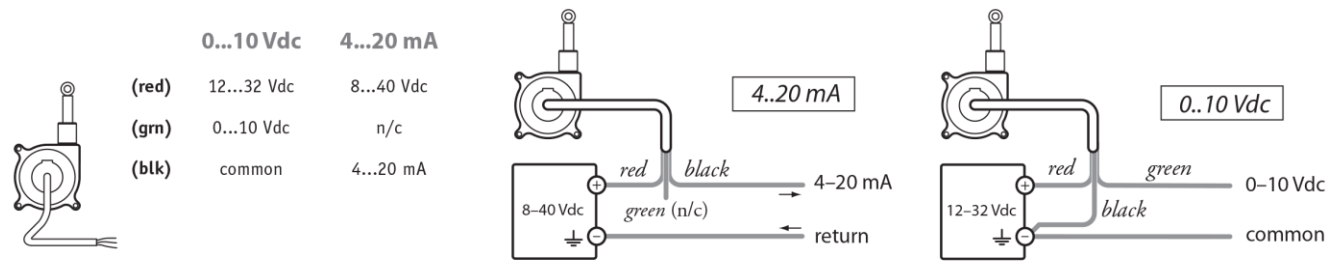
### Output Signal



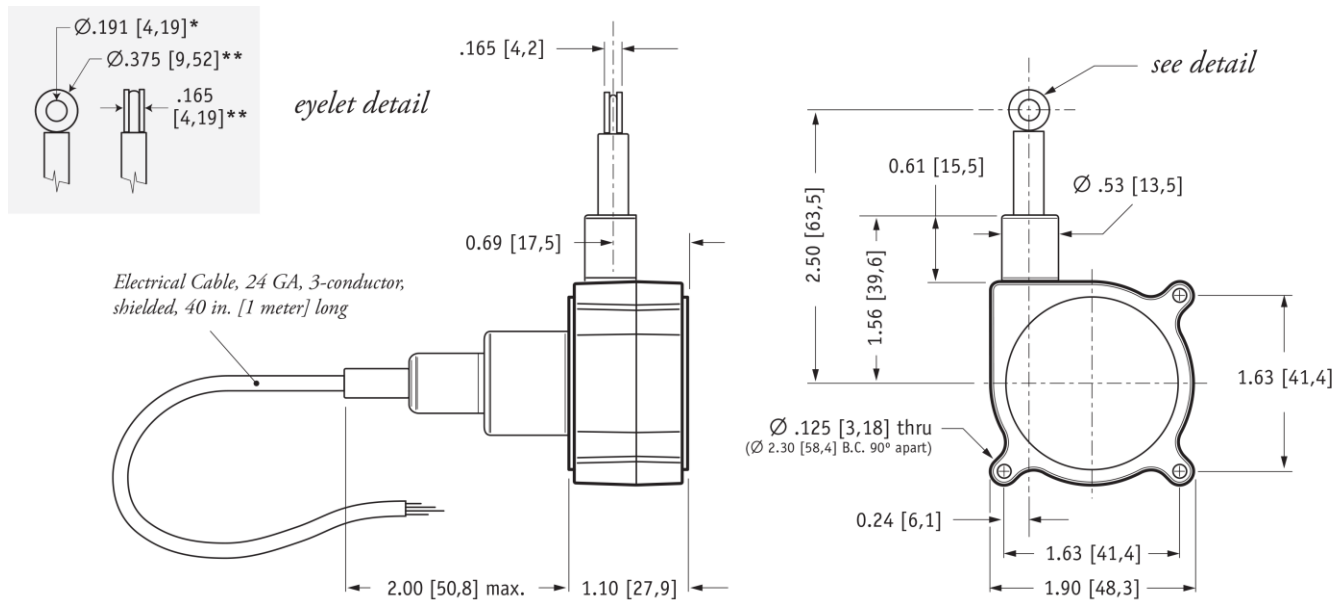
## SP3

Compact String Pot • 4..20mA / 0..10Vdc

### Electrical Connection



### Outline Drawing (w/o bracket)



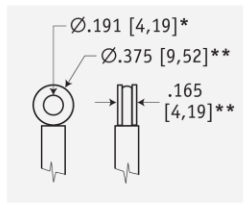
DIMENSIONS ARE IN INCHES [MM]  
tolerances are 0.04 IN. [1,0 MM] unless otherwise noted.

\* tolerance = +.005 -.001 [+0,1 -0,0]  
\*\* tolerance = +.005 -.005 [+0,1 -0,1]

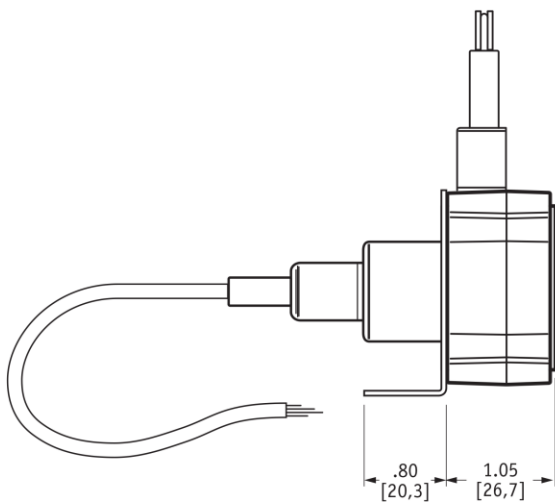
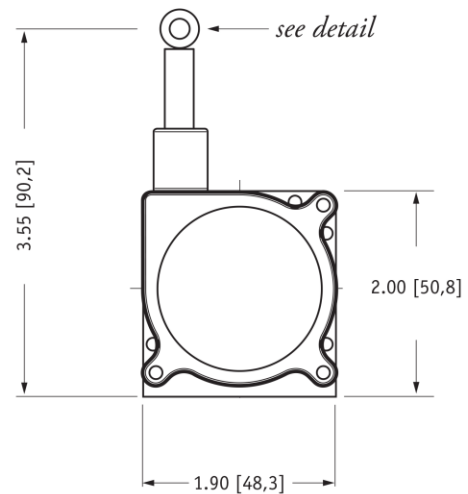
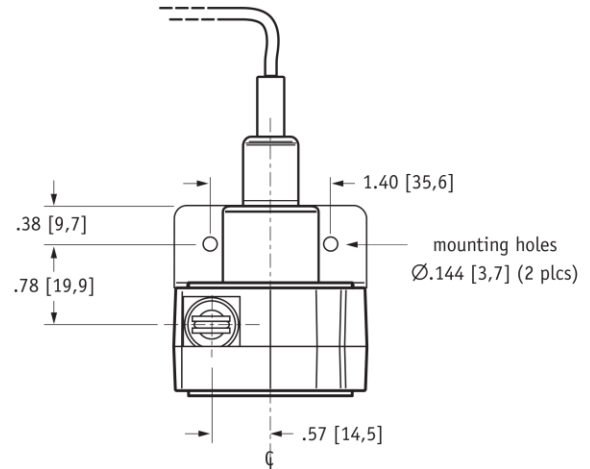
## SP3

Compact String Pot • 4..20mA / 0..10Vdc

### Outline Drawing (w/ bracket)

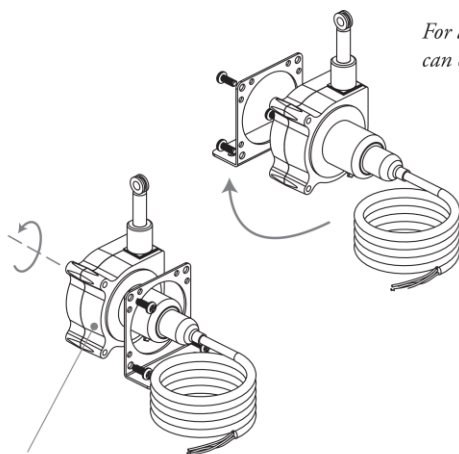


eyelet detail



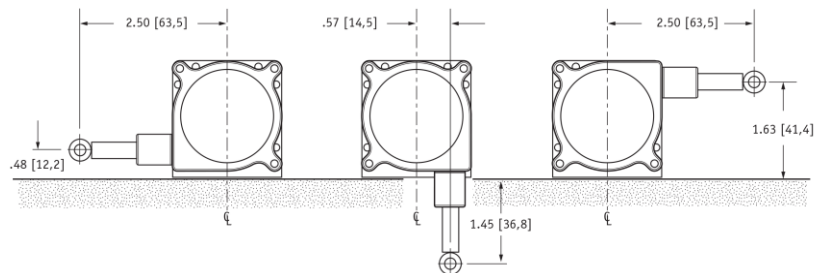
DIMENSIONS ARE IN INCHES [MM]  
tolerances are 0.04 IN. [1,0 MM] unless otherwise noted.

\* tolerance = +.005 -.001 [+0,1 -0,0]  
\*\* tolerance = +.005 -.005 [+0,1 -0,1]



For added flexibility, mounting bracket  
can easily be switched to the opposite side.

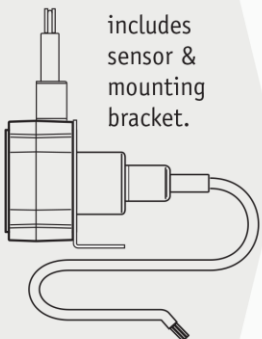
To change measuring cable direction  
simply remove the 3 bracket attaching screws  
and rotate sensor body to desired direction.



## SP3

Compact String Pot • 4..20mA / 0..10Vdc

### Ordering Information

 includes sensor & mounting bracket.	Part No.	full stroke range	accuracy (% of f.s.)	cycle life
	SP3-4	4.75 in (120 mm)	1.00%	2.5M cycles
	SP3-12	12.5 in (317 mm)	0.25%	500K cycles
	SP3-25	25 in (635 mm)	0.25%	500K cycles
	SP3-50	50 in (1270 mm)	0.25%	250K cycles