

## Intelligent Digital Timer User Manual

Thanks for selecting **MYPIN** product!

Before operating this instrument, please carefully read this manual and fully understand its contents. If any problems, please contact our sales or distributors whom you buy from. This manual is subject to change without prior notice.

### Warning

Do not turn on the power supply until all of the wiring is completed.

Otherwise electrical shock.

Do not turn on the power supply when cleaning this instrument.

Do not disassemble, repair or modify the instrument. This may cause electrical shock or malfunction.

Use this instrument in the scope of its specifications. Otherwise malfunction may result.

### Caution

Avoid interference sources.

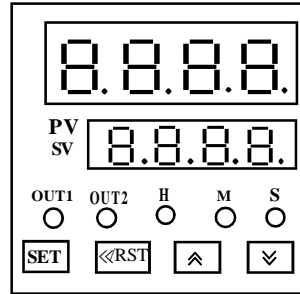
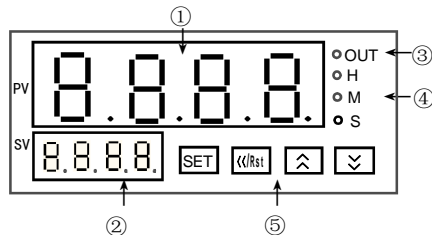
Avoid using this instrument in environment of strong shock or concussion.

Avoid using this instrument in environment full of corrosivity, flammable gas, dust, strong vibration.

### Features

- UP/DOWN timing mode ; 10 decimal or 24H cycle timing ; accumulating timing, interval timing, pulse-width timing etc.
- timing / delay cycle, pause / reset / start / stop switch control
- Automatic time saving after power OFF (flash EEPROM)
- preset time Relay control output
- range: 0.01s-9999H, 0.01S-999999H  
99H59min01S, xx year xx month xx date 0-24 Hour cycle
- RS232 / RS485 / LAN RJ45 interface, MODBUS RTU protocol.

### Panel



### Indicate lamps:

OUT1: output 1 indicate lamp ON: active OFF: inactive

OUT2: output 2 indicate lamp ON: active OFF: inactive

Time unit: H:Hour M:Minute S:Second

PV LED window : timing display

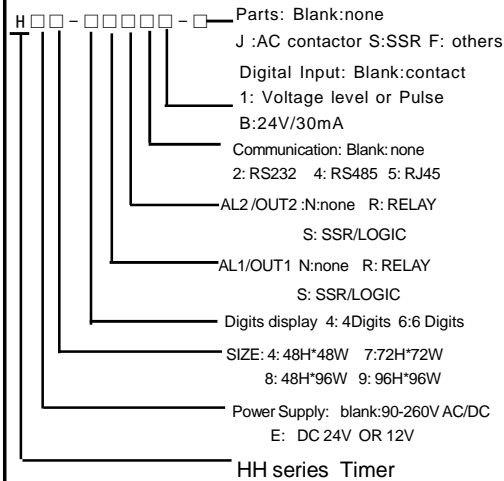
SV LED window : Preset time / Delay time

**SET** : Setting/Confirm key

**<<RST** : Shift / Reset key

**Up** : Up key **Down** : Down key

### Models



E.g HH4-4RN 4 digits timer, power supply:  
90-260V AC/DC, SIZE: W48\*H 48\* L80mm,  
OUT1:Relay,OUT2:none,comm:none

### Specification

Power	90-260VAC/DC 50/60Hz or 18-30V AC/DC
Accuracy	±0.001%
Reset time	Terminal reset <0.1S
timing range	4 : 0.01S-9999H 6: 0.01S-999999H
delay range	0.01S - 9999H
Output	Relay: NO/NC contact, AC 250V 3A resistive load, SSR: 24V / 12V 20mA
Communication	RS485 / RS232 / RJ45
Environment	-20-50 °C , 35-85%RH

### Mounting and Sizes

HH4 SIZE: 48H \* 48W \* 80Lmm,

Mounting: 45H \* 45W mm

HH7 SIZE: 72H \* 72W \* 80Lmm

Mounting: 68H \* 68W mm

HH8 SIZE: 48H \* 96W \* 80Lmm,

Mounting: 45H \* 92W mm

HH9 SIZE: 96H \* 96W \* 80Lmm,

Mounting: 92H \* 92W mm

### Time Manual reset .

- RST key. Press RST key until PV LED display 0.
- Terminal RST for reset, short terminal RST once to Reset

### Operation Instructions

1 preset timing value (SV windows):  
press <</RST to shift, LED flashes, Press **Up** / **Down** to set the value,  
Press **SET** key to confirm.

### 2 Timing unit setting

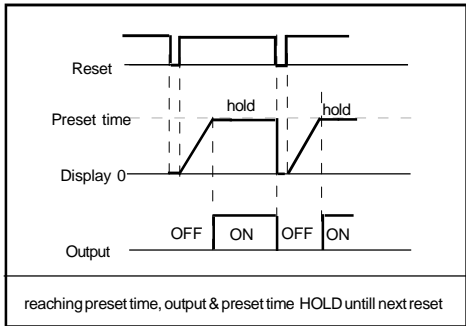
keeping Holding **SET** key, then press **Up** key once at the same time,  
timing unit LED changes among H M S, release the **Up** key In the  
required position , then press **SET** to confirm.

3 timing controlled mode

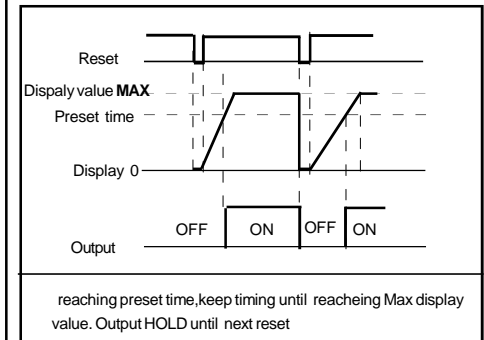
- N timing mode
- F Accumulating timing mode
- R cyclic ON-OFF timing mode

### Output & Rest modes

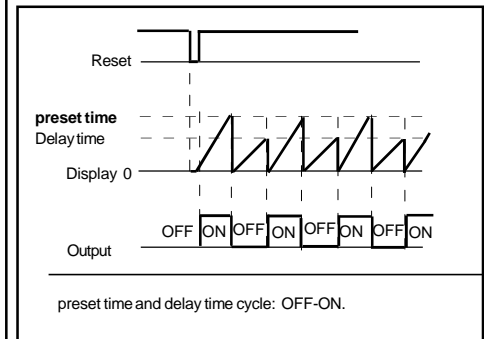
N output:



F output:

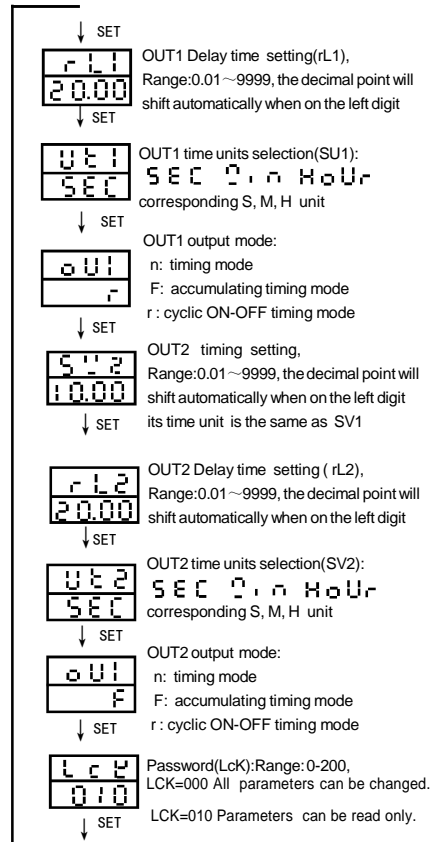


R output:



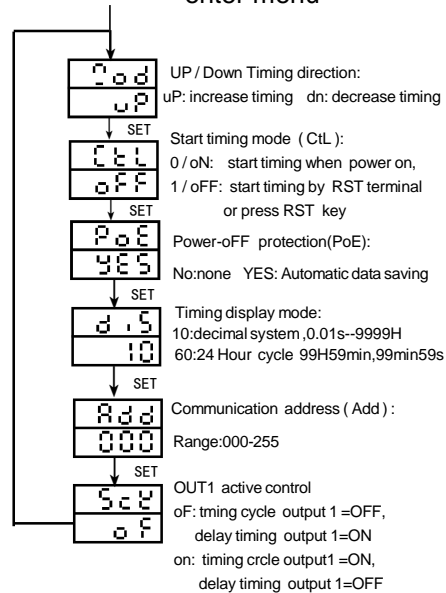
## Parameters Setting

Press SET key until to enter menu



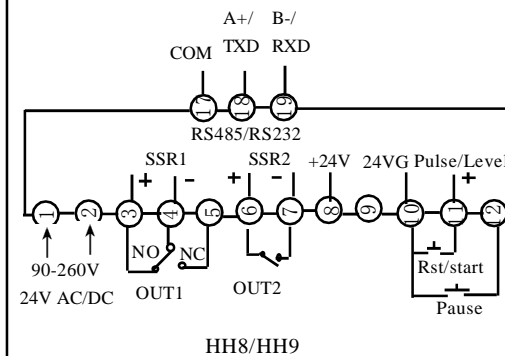
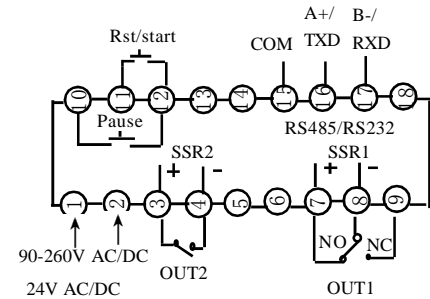
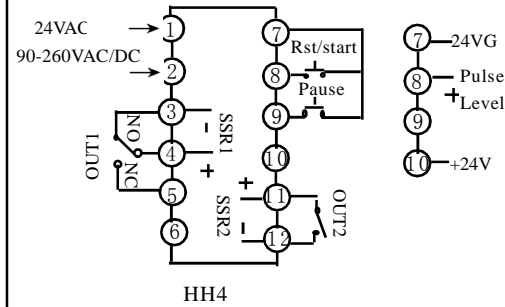
Press SET key>3 Seconds to quit menu  
 or press SET once to return rL1

Press ▲ and ▼ key together until to enter menu

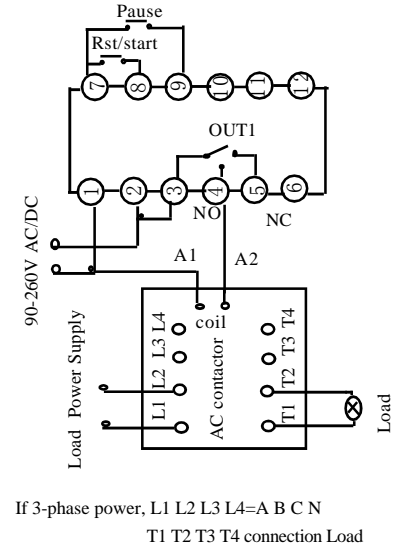


## Diagram

(if any changing ,pls refer the lable on timer)



## Application



## Complete products contains

- ★1 copy of user manual,
- ★1 inspection QC label,
- ★2 installing brackets.

We are responsible for the overal repairment for the failure of manufacturing quality within 12 months since the date of purchase.Repair fee will be charged accordingly for damage caused by improper use..

## Modbus protocol will be explained with the product.

## Main Products

- Counter & length meter
- Time relay
- Temperature controller
- Panel meter
- Frequency/Tacho/Line-speed meter
- Proximity sensor Photo-electrical sensor
- Ampere & Voltage Power meter
- Transmitter
- Sensor indicator
- Power adjustor