

WH Series of Watt-hour Meter Instruction Manual

Thanks for selecting **MYPIIN** products!
Before operating this instrument, please carefully read this manual and fully understand its contents. If any problems, please contact our sales or distributors whom you buy from. This manual is subject to change without prior notice

Warning

Please do not turn on the power supply until all of the wiring is completed.
Do not wire when the power is on.
Do not turn on the power when cleaning this instrument.
Do not disassemble, repair or modify the instrument.
Use this instrument within the scope of its specifications.

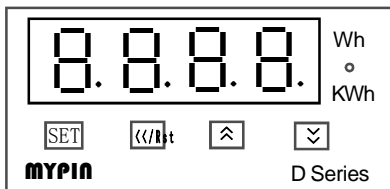
Caution

This instrument should be installed in a domestic environment.
The operating environment : 0 °C (32F) to 50°C (122F). between 0 (32F) to 50 (122F).
To avoid using this instrument in environment full of dust or caustic gas/strong shock / concussion/ overflow water or explosive oil.

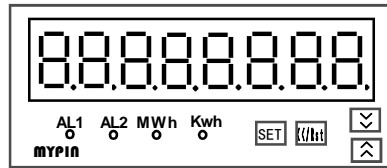
Applications

- Multi-measurement: AC/DC Watt-hour ,Kilowatt-hour (KWh)
- range: 0.0001-99999999 Wh or KWh, power-down data saving for at least 10 years (EEPROM)
- input: single-phase or 3-phase, AC 1mA-5A,0.1V-600V, current and Voltage Ratio can be set)
- Multi-Alarms and transmit output.
- RS485 RS232 Modbus-RTU protocol
- Can be widely applied to power system.

Panel



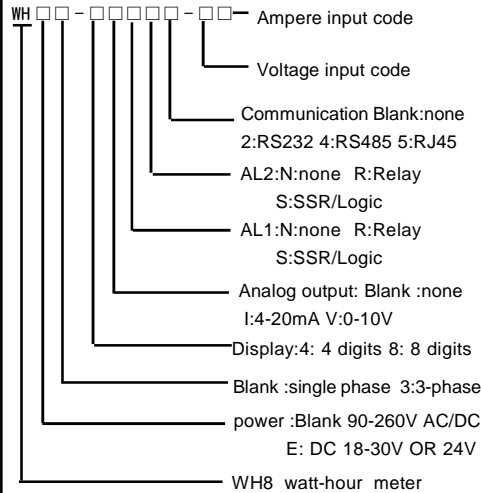
WH8-4



WH8-8

PV: Wh or KWh display
SET: Select / Confirm key
Shift: Shift / Clear Kwh key
Up key
Down key

Ordering code



E.g :WH8-8RN4-00,8 Digits Watt-hour Meter,power supply:90-260V,AL1 :relay alarm ,AL2:none comm:RS485 input: AV 0-600V/ AC 0-5A

Ampere inputs

Input code	range	Input code	range
0	AC 0-5A	4	DC 0-5A
1	AC 0-1A	5	DC 0-1A
2	AC 0-10A	6	DC 0-75mV
3	AC 0-100mA	F	order

Voltage inputs

Input code	range	Input code	range
0	AC 0-600V	4	DC 0-500V
1	AC 0-300V	5	DC 0-100V
2	AC 0-100V	6	DC 0-30V
3	AC 0-100mV	F	order

Specifications

Power supply	90-260V AC or 1 8-30V AC/DC (DC24V)
Consumption	≤5VA
Accuracy	0.3%F.S±2digit
Frequency range	0-2.5KHz
Alarm	Relay: AC 250V/3A or DC 30V/3A resistive Load
PT/CT	Voltage or current ratio can be set free
Analog	0-10V or 4-20mA, free set for output range
Communication	RS232 or RS485 Modbus RTU
Weight	≤350g

Mounting and Dimension

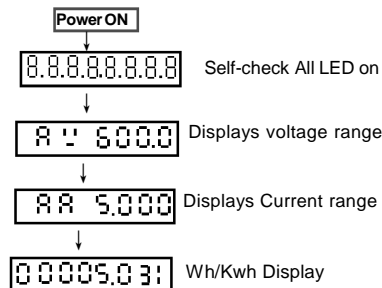
- ★ Dimensions:W96 x H48 x L80mm
- ★ Mounting: W 91.5±0.5 x H44.5±0.5

Parameter setting

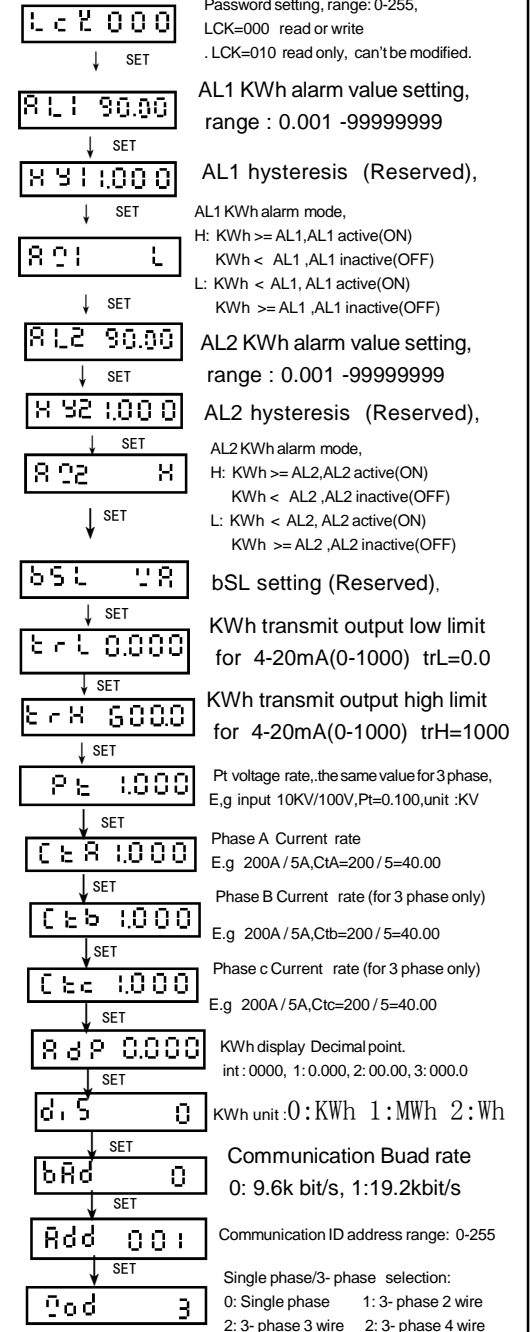
- In the displaying estate, Keep holding 'SET' key until to enter setting menu.
- Press <</RST key,Shift / LED flashes,
- press </> key to modify data
- press SET key to confirm.
- Press SET key to read or change the following parameters one by one.

★Kwh clear: in display estate, press Shift key until the totalized Kwh display changes 0
The instrument will return to the measuring estate without any operation for 25 seconds.

Operation processes



Press SET key until to enter menu



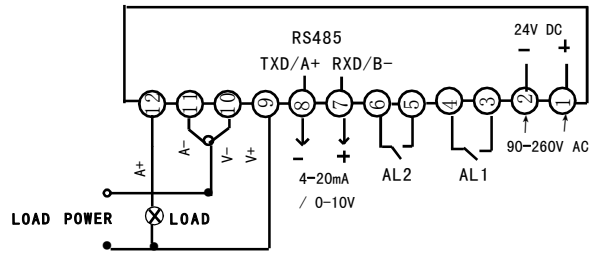
Press SET key until to quit or return Lck parameter

Terminal configurations

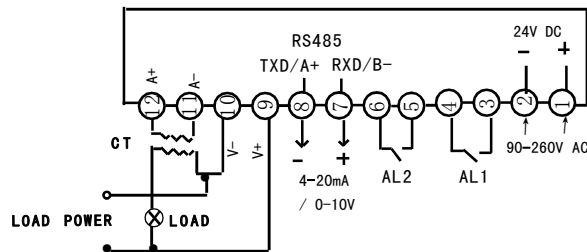
(If any changed, please refer to the table on meter)

1 Single phase wiring diagram

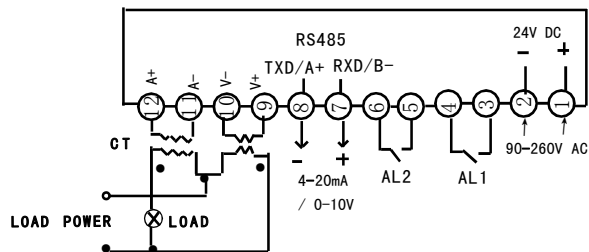
A+ V+ A- V- :phase comparison relationship



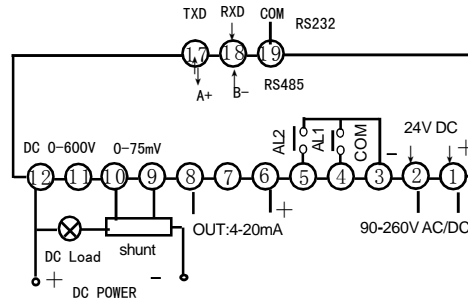
Direct input wiring diagram



With Current CT wiring diagram



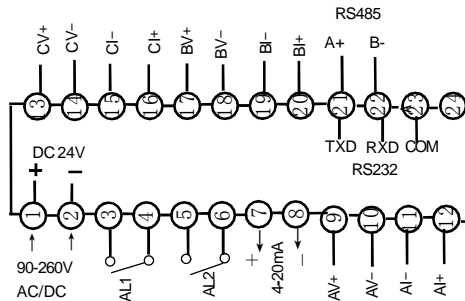
With Current CT / Voltage PT wiring diagram



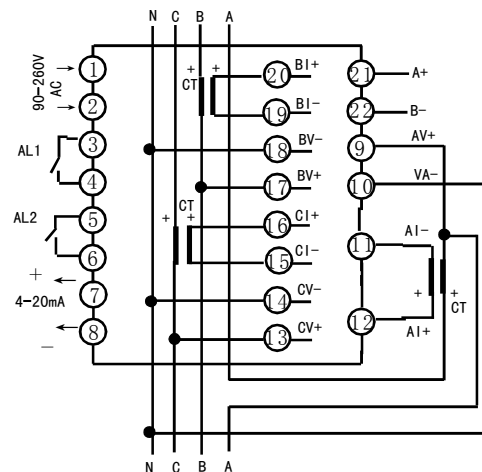
WH8 Direct current and voltage input wiring diagram

2 3-phase wiring diagram

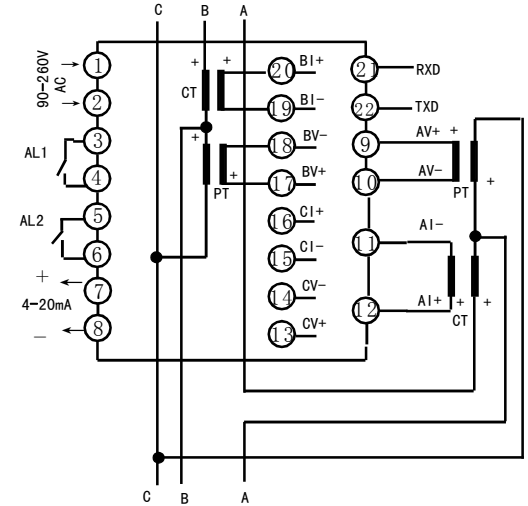
AI+ AV+ AI- AV- BI+ BV+ BI- BV- CI+ CV+ CI- CV- :phase comparison relationship



2,1 3-phase 4 wires, without P/T, CT connections



2,2 3 phase 3 wires (A / B phase only)



Complete products contains

- ★1 copy of user manual,
- ★1 inspection QC label,
- ★2 installing brackets.

We are responsible for the overall repairment for the failure of manufacturing quality within 12 months since the date of purchase. Repair fee will be charged accordingly for damage caused by improper use..

Modbus protocol or other information

PLS Download from: www.mypinchina.com

IP/wechat: 86-18689341985, Email: sale@mypinchina.com

Main Products

- Counter & length meter
- Time relay
- Temperature controller
- Panel meter
- Frequency/Tacho/Line-speed meter
- Proximity sensor Photo-electrical sensor
- Ampere & Voltage Power meter
- Transmitter
- Sensor indicator
- Power adjustor