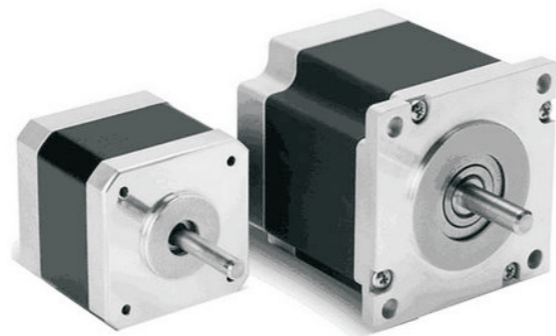


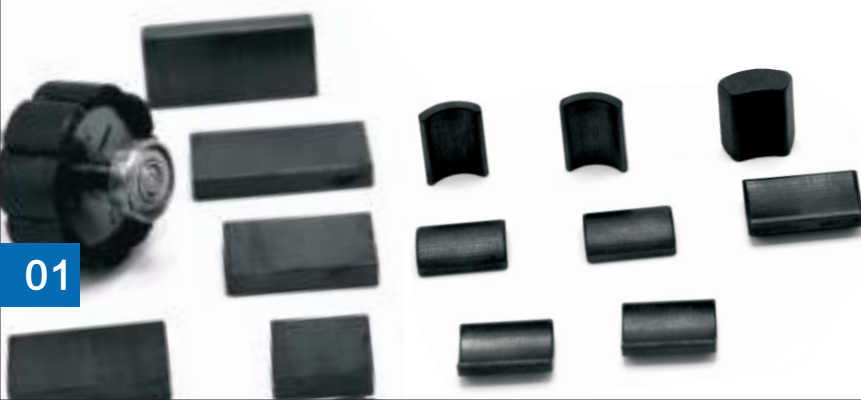
Wet-Aniso.Hard Ferrite Magnets 湿式异方性铁氧体永磁

我司1990年开始生产湿式异方性铁氧体永磁。拥有成熟的经验、专注的研发团队，我司成为中国最大的永磁制造商。2018年的产出达到3.8万吨，16亿件，并且还会继续改善和提高生产能力。我司产品广泛应用于电机、汽车应用、家电和办公室应用领域；是市场不可缺少的重要部分。

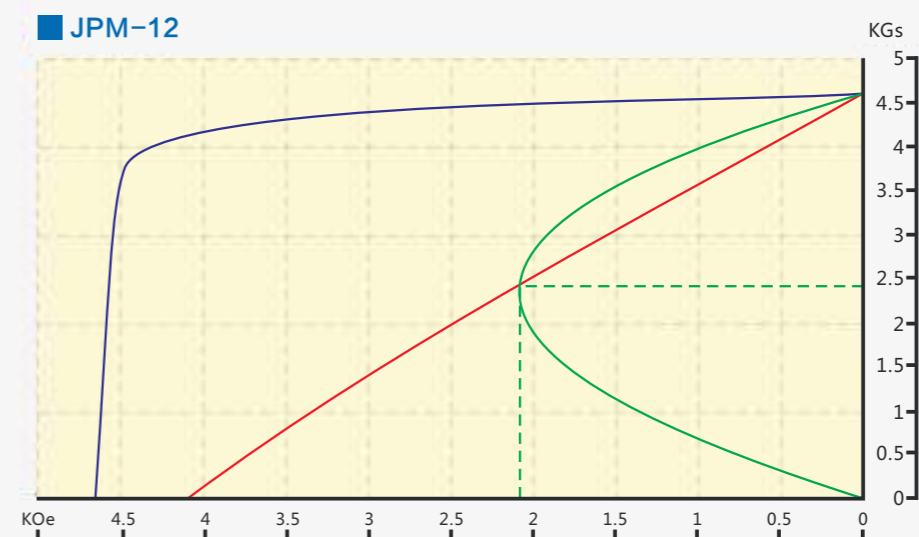
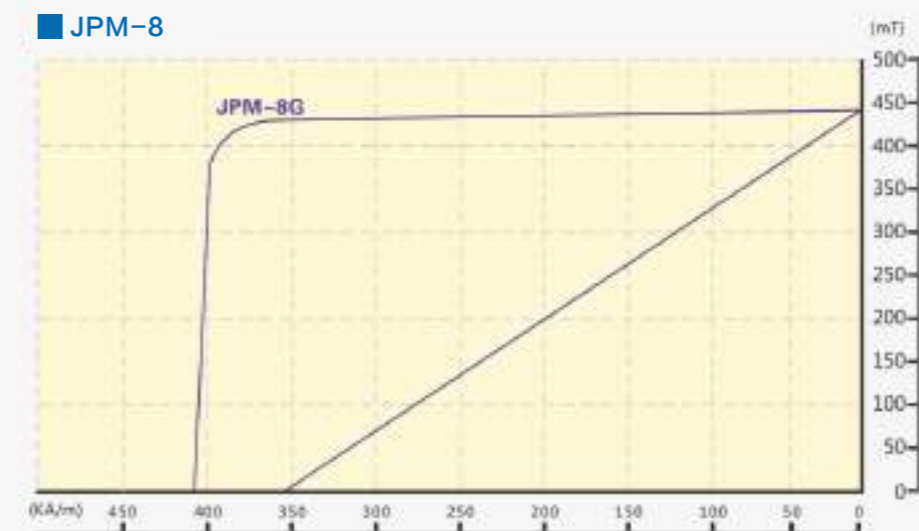
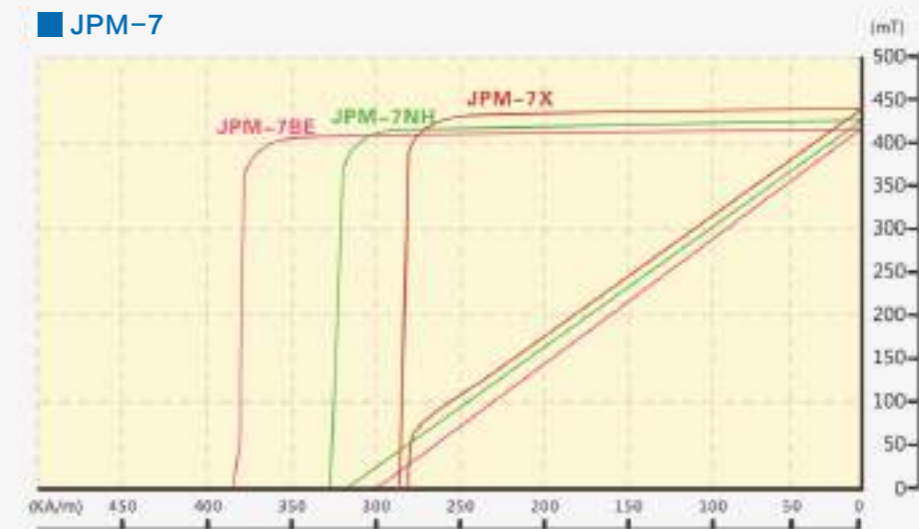
JPMF has been producing wet anisotropic Hard ferrite magnets since 1990. Nowadays, JPMF is the largest magnet manufacturer in China with ripe experience and professional R&D team. Total output in 2008 reaches 38,000 T, 1.6 billion pieces. JPMF is still making improvement and increasing producing capacity. JPMF's products are widely used in electrical machinery, automotive applications, home appliances and office applications. JPMF has become one of the most important part in magnet market.



产品应用
Product Application



退磁曲线 / DEMAGNETIZATION CURVE





▶ JPMF产品磁特性表(湿压) / MATERIAL CHARACTERISTICS

材料牌号 Grade	剩磁 Br	矫顽力 Hcb	内禀矫顽力 Hcj	最大磁能积 (BH)max	材料 Material	应用 Application	
JPM-3	330~360mT	230~260kA/m	235~270kA/m	21~25kJ/m ³	SrO-6Fe ₂ O ₇	汽车电机 Automotive Motors	
	3300~3600Gs	2891~3268Oe	2954~3394Oe	2.6~3.1MGOe			
JPM-4A	375~400mT	250~274kA/m	260~285kA/m	27~31kJ/m ³	SrO-6Fe ₂ O ₇		
	3750~4000Gs	3143~3444Oe	3268~3582Oe	3.4~3.9MGOe			
JPM-4B	385~405mT	220~250kA/m	230~260kA/m	29~31.8kJ/m ³	SrO-6Fe ₂ O ₇		电动工具 Power Tool
	3850~4050Gs	2765~3143Oe	2891~3268Oe	3.6~4.0MGOe			
JPM-5A	360~380mT	260~285kA/m	310~335kA/m	25~29kJ/m ³	SrO-6Fe ₂ O ₇		家用电器 Household Appliance
	3600~3800Gs	3268~3582Oe	3897~4211Oe	3.1~3.6MGOe			
JPM-5B	330~360mT	260~285kA/m	330~360kA/m	24~27kJ/m ³	SrO-6Fe ₂ O ₇		办公自动化设备 OA Facilities
	3300~3600Gs	3268~3582Oe	4148~4525Oe	3.0~3.4MGOe			
JPM-5X	400~420mT	240~270kA/m	250~275kA/m	30~34kJ/m ³	SrO-6Fe ₂ O ₇	办公自动化设备 OA Facilities	
	4000~4200Gs	3017~3394Oe	3142~3457Oe	3.8~4.3MGOe			
JPM-5XH	395~415mT	265~285kA/m	270~290kA/m	31~34kJ/m ³	SrO-6Fe ₂ O ₇		
	3950~4150Gs	3331~3582Oe	3394~3645Oe	3.9~4.3MGOe			
JPM-5N	420~440mT	215~240kA/m	218~245kA/m	33~37kJ/m ³	SrO-6Fe ₂ O ₇		电动工具 Power Tool
	4200~4400Gs	2703~3017Oe	2740~3080Oe	4.1~4.6MGOe			
JPM-5H	380~400mT	275~300kA/m	300~330kA/m	27~32kJ/m ³	SrO-6Fe ₂ O ₇		汽车电机 Automotive Motors
	3800~4000Gs	3457~3771Oe	3771~4148Oe	3.4~4.0MGOe			
JPM-5E	350~375mT	265~295kA/m	355~380kA/m	24~27kJ/m ³	SrO-6Fe ₂ O ₇		办公自动化设备 OA Facilities
	3500~3750Gs	3331~3708Oe	4462~4777Oe	3.0~3.4MGOe			
JPM-6X	405~425mT	270~295kA/m	280~305kA/m	31~35kJ/m ³	SrO-6Fe ₂ O ₇	家用电器 Household Appliance	
	4050~4250Gs	3394~3708Oe	3519~3833Oe	3.9~4.4MGOe			
JPM-6E	370~390mT	278.6~302.4kA/m	382~405.8kA/m	25.9~29.1kJ/m ³	SrO-6Fe ₂ O ₇	家用电器 Household Appliance	
	3700~3900Gs	3502~3801Oe	4802~5101Oe	3.3~3.7MGOe			
JPM-6B	410~430mT	291.1~314.9kA/m	306.1~329.9kA/m	31.8~35kJ/m ³	SrO-6Fe ₂ O ₇		
	4100~4300Gs	3659~3958Oe	3848~4147Oe	4.0~4.4MGOe			

材料牌号 Grade	剩磁 Br	矫顽力 Hcb	内禀矫顽力 Hcj	最大磁能积 (BH)max	材料 Material	应用 Application	
JPM-6H	390~410mT	290.5~314.3kA/m	346.2~370kA/m	28.7~31.9kJ/m ³	SrO-6Fe ₂ O ₇	汽车电机 Automotive Motors	
	3900~4100Gs	3652~3951Oe	4352~4651Oe	3.6~4.0MGOe			
JPM-6N	430~450mT	246.7~270.5kA/m	250.7~274.5kA/m	35.1~38.3kJ/m ³	SrO-6Fe ₂ O ₇		
	4300~4500Gs	3101~3400Oe	3151~3450Oe	4.4~4.8MGOe			
JPM-7BE	410~430mT	302~324kA/m	382~405.8kA/m	33.0~36.2kJ/m ³	SrO-6Fe ₂ O ₇		电动工具 Power Tool
	4100~4300Gs	3795~4072Oe	4800~5099Oe	4.15~4.55MGOe			
JPM-7NH	430~450mT	316~340kA/m	340~366kA/m	35.4~38.6kJ/m ³	SrO-6Fe ₂ O ₇		
	4300~4500Gs	3971~4273Oe	4273~4599Oe	4.45~4.85MGOe			
JPM-7X	440~460mT	260~284kA/m	270~294kA/m	37.2~39.4kJ/m ³	SrO-6Fe ₂ O ₇		办公自动化设备 OA Facilities
	4400~4600Gs	3268~3569Oe	3393~3695Oe	4.67~4.95MGOe			
JPM-8G	440~460mT	314.3~354.1kA/m	382~429.7kA/m	36.6~39.8kJ/m ³	SrO-6Fe ₂ O ₇	家用电器 Household Appliance	
	4400~4600Gs	3950~4450Oe	4800~5400Oe	4.6~5.0MGOe			
JPM-12B	450~470mT	310~342.3kA/m	350~382.1kA/m	38.2~41.4kJ/m ³	SrO-6Fe ₂ O ₇		
	4500~4700Gs	3900~4300Oe	4400~4800Oe	4.8~5.2MGOe			
JPM-12K	415~435mT	300~350kA/m	430~470kA/m	31.8~36.6kJ/m ³	SrO-6Fe ₂ O ₇		
	4150~4350Gs	3800~4400Oe	5400~5900Oe	4.0~4.6MGOe			

▶ 其他物理特性 / OTHER PHYSICAL CHARACTERISTICS

	居里点 Curie Temperature	比热 Specific Heat	电阻 Electrical Resistance	烧结密度 Sintered Density	工作点温度系数 Temperature Coefficient	T抗弯强度 Deflective Strength	热膨胀系数 Linear Expansion Coefficient	
单位 Unit	°C	cal/g·°C	Ω·m	g/cm ³	%/°C	kgf/mm ²	c//°	c⊥°
数值 Numeric Value	450~460	0.15~0.2	>10 ⁴	4.7~5.2	-0.2	5~10	14~15×10 ⁻⁶	9~10×10 ⁻⁶

*c//:平行于取向方向Anisotropic direction

*c⊥:垂直于取向方向At right angles to the anisotropic direction

所有的参数都可能被修改, 修改时不另行通知

JPMF reserves the right to modify parameters without notice.



Dry-Aniso. Isotropic Hard Ferrite Magnets

干式异方性铁氧体永磁 干式等方性铁氧体永磁

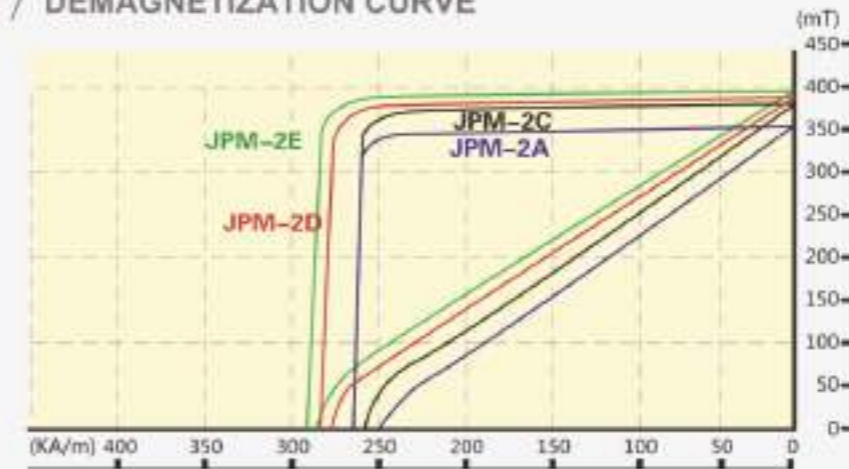
我司从1978年开始使用日本设备和原料生产干式等方性铁氧体永磁，并在80年代实现设备和原料的国产化。1984年引进日本设备，原料和技术，生产干式异方性铁氧体永磁，并在80年代末实现设备和原料的国产化，工艺成熟。生产能力高达16亿件/年。

JPMF started to use Japanese equipment and raw materials to produce dry anisotropic hard ferrite magnet in 1978. In 1984, the JPMF introduced Japanese equipment, raw materials and technology to produce dry isotropic hard ferrite magnet. JPMF has realized the localization of equipment and raw materials in 1980s. Our annual produce capacity reaches 1.6 billion pieces.



产品应用
Product Application

退磁曲线 / DEMAGNETIZATION CURVE



JPMF产品磁特性表(干压异方性) / MATERIAL CHARACTERISTICS

材料牌号 Grade	剩磁 Br	矫顽力 Hcb	内禀矫顽力 Hcj	最大磁能积 (BH)max	材料 Material	应用 Application
JPM-2A	340~360mT 3400~3600Gs	215~240kA/m 2703~3017Oe	235~270kA/m 2954~3394Oe	21~24kJ/m³ 2.6~3.0MGOe	SrO·6Fe·O ₂	办公自动化设备 OA Facilities
JPM-2C	350~380mT 3500~3800Gs	228~252kA/m 2866~3168Oe	235~265kA/m 2954~3331Oe	24~28kJ/m³ 3.0~3.5MGOe	SrO·6Fe·O ₂	家用电器 Household Appliance
JPM-2D	365~395mT 3650~3950Gs	230~260kA/m 2891~3268Oe	235~275kA/m 2954~3457Oe	26~30kJ/m³ 3.3~3.8MGOe	SrO·6Fe·O ₂	汽车电机 Automotive Motors
JPM-2E	375~400mT 3750~4000Gs	250~274kA/m 3143~3444Oe	260~285kA/m 3268~3582Oe	27~31kJ/m³ 3.4~3.9MGOe	SrO·6Fe·O ₂	

JPMF产品磁特性表(干压等方性) / MATERIAL CHARACTERISTICS

材料牌号 Grade	剩磁 Br	矫顽力 Hcb	内禀矫顽力 Hcj	最大磁能积 (BH)max	材料 Material	应用 Application
JPM-1A	200~235mT 2000~2350Gs	135~160kA/m 1697~2011Oe	210~250kA/m 2640~3143Oe	7.1~9.0kJ/m³ 0.9~1.1MGOe	BaO·6Fe·O ₂	微电机、文具、玩具 Micro Motor/Stationery/Toy

其他物理特性 / OTHER PHYSICAL CHARACTERISTICS

	居里点 Curie Temperature	比热 Specific Heat	电阻 Electrical Resistance	烧结密度 Sintered Density	工作点温度系数 Temperature Coefficient	T抗弯强度 Deflective Strength	热膨胀系数 Linear Expansion Coefficient	
单位 Unit	°C	cal/g·°C	Ω·m	g/cm³	%/°C	kgf/mm²	c//	c⊥
数值 Numeric Value	450~460	0.15~0.2	>10⁴	4.7~5.1	-0.2	5~10	14~15×10⁻⁶	9~10×10⁻⁶

*c//: 平行于取向方向 Anisotropic direction

*c⊥: 垂直于取向方向 At right angles to the anisotropic direction

所有的参数都可能被修改，修改时将不另行通知

JPMF reserves the right to modify parameters without notice.