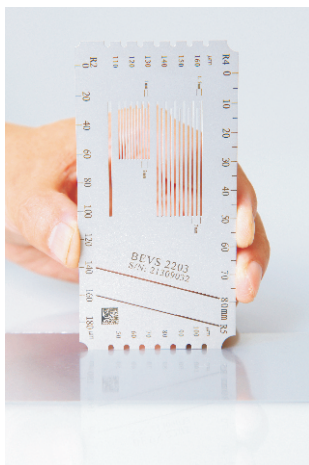
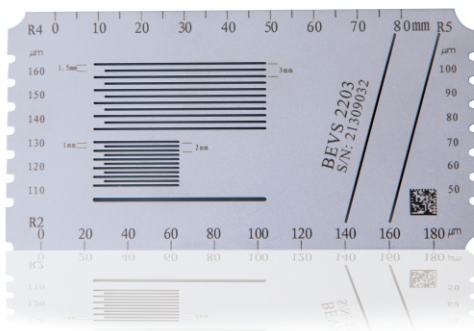


Adhesion

Multi-hatch Gauge

■ Introduction:

BEVS 2203 Multi-hatch Gauge is designed and manufactured according to BS3962-6, standard with the convenient and simple feature. It's widely used to measure the coating film adhesion of plastic and wood.



■ Features:

- ◆ Adhesion
- ◆ Opacity
- ◆ Wet film thickness
- ◆ Edge roughness of sharp corner
- ◆ Cross cutting line



■ Order Information:

BEVS 2203 Multi-hatch Gauge