

# Automatic Panel Sprayer

## Introduction:

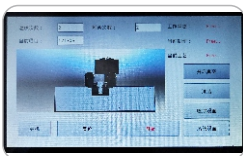
The BEVS 1828 Automatic Panel Sprayer is a fast, intelligent and automatic device for spraying panel, with advantage of reliable uniform coating for testing and evaluation. It is equipped with a 10-inch high-definition touch screen display for easy operation and has features like a one-button start, fully automatic spray, automatic cleaning spray gun, quickly change paint and spray gun. It is an advanced spraying equipment with intelligent programming spraying process and a good choice for spraying test panel in laboratory.

## Technical info:

- ◆ Applicable paint type: water-based or solvent-based
- ◆ Applicable paint viscosity range: 1-20000cps
- ◆ Moving speed: X-axis 50-300 mm/s; Y-axis 1-30 mm/s; Z-axis 50-300 mm/s
- ◆ Stroke length: 500 x 150 x 350 mm (X x Y x Z axis)
- ◆ Gun distance: 150-250 mm
- ◆ Atomization air pressure: 0.3-0.7 Mpa
- ◆ System pressure: 0.4-0.7 Mpa
- ◆ Panel lift height: 350 mm
- ◆ Spraying area: max. L300 x W450 mm; or 9 pcs of L100 x W150 mm standard panels
- ◆ Spray gun type: gravity automatic spray gun / manual spray gun
- ◆ Dimension (Lx W x H): 955 x 550 x 1200 mm (1700 mm extension rod)
- ◆ Machine shell: SUS 304 stainless steel



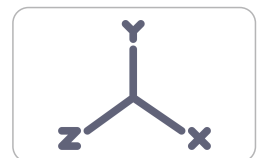
## Features:



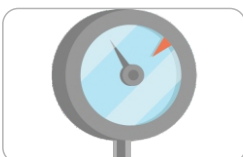
10 inch HD touch panel



Intelligent programming spraying process



Three-axis automatic spraying



Automatic spraying pressure control



Single / dual spray gun



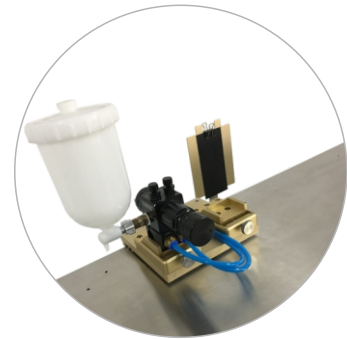
Quickly change spray gun fixture

## Function:

- ◆ Three-axis (X, Y, Z,) automatic control; X and Z axes are linked according to the setting program, and the Y-axis is automatically adjusted according to the distance parameter manually input or the preset in the mode (only for standard equipped spray gun)
- ◆ With cross wet spray process
- ◆ Multi-viscosity mode preset, input the required film thickness value and spray area, the system automatically calculates the spray cycles, the path and the start/end of the spray position, and spray the required thickness
- ◆ Custom spray mode: input parameters such as spray movement speed, gun distance, atomization pressure, spray cycles, start and end spray position, etc. It automatically sprays according to the set parameters. The custom mode parameters can be saved and applied next time
- ◆ The interface displays the current parameters in real time, such as the current coating thickness, the run spray cycles, remaining spray cycles, the estimated final film thickness, and the estimated remaining time
- ◆ Real-time monitor the environment, automatically power off to prevent explosion when reaching the set VOC (Optional function)

## Spray parameters:

- ◆ Panel moving speed: X-axis 50-300 mm/s; Y-axis 1-30 mm/s; Z-axis 50-300 mm/s
- ◆ Gun distance: 150-250 mm
- ◆ Atomization pressure: 0-0.7 Mpa
- ◆ Spray width (manual adjustment)
- ◆ Paint flow volume (manual adjustment)
- ◆ Spray gun nozzle diameter (optional according to actual conditions)



## Application:

Automotive, aerospace, industrial and protective coatings, high-performance coatings

## Standard:

ASTM D823/A

## Order info:

BEVS 1828 Automatic Panel Sprayer (Including one automatic spray gun)

