

# Intelligent Cone and Plate Viscometer

## Introduction:

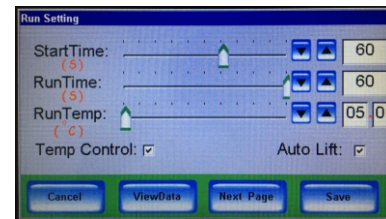
BEVS 1132 Intelligent Cone and Plate Viscometer is a highly accurate instrument that research the rheological properties of fluid products. It is a automatic viscometer with adjustable shear rate and controllable temperature. High precision DC motor and automatic lifting platform to keep the viscosity measurement becomes simpler and more accurate.

Since Newtonian or non-Newtonian fluids show different viscosities relative to the shear rate, the BEVS1132 Intelligent Cone and Plate Viscometer strictly control the shear rate of  $10,000 \text{ S}^{-1}$  (BS standard) and  $12,000 \text{ S}^{-1}$  (ASTM standard). In addition, the shear rate of  $333\text{-}20000 \text{ S}^{-1}$  can also be freely controlled by the operator.

Since most viscosity measurements are very sensitive to temperature, the BEVS 1132 can accurately control the temperature control plate from  $+5 - 75 \text{ }^\circ\text{C}$  by placing the sample on the temperature control plate. The temperature curve and the shear rate viscosity curve can be obtained. The portable instrument makes it more practical and versatile in the study of rheological properties of Newtonian or non-Newtonian products.



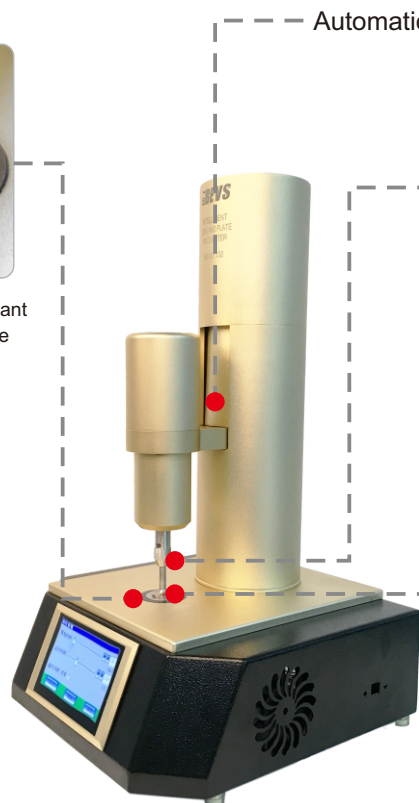
Measurement



Setting



High-precision wear-resistant temperature control plate



Automatic lifting



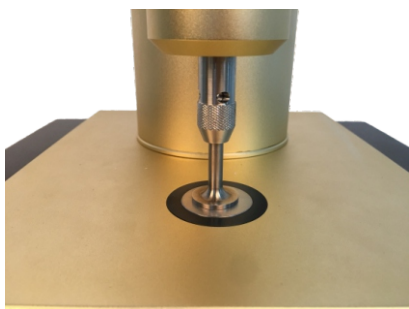
Quickly change cone



High precision wear-resistant cone

## Features:

- ◆ Automatic lifting
- ◆ Automatic measurement
- ◆ Compatible with various speeds
- ◆ High definition touch screen display
- ◆ Display temperature and viscosity curve
- ◆ Display shear rate
- ◆ Precise temperature control
- ◆ Output data and report



## ■ Technical info:

- ◆ Rotational speed: 100-1500 rpm
- ◆ Shear rate: 333-20000 s<sup>-1</sup>
- ◆ Controllable temperature range: +5 - 75°C
- ◆ Cone: 5 types
- ◆ Resolution: 1 cP
- ◆ Measurement accuracy: ±1% (full scale)
- ◆ Measurement repeatability: ±0.5%(full scale)
- ◆ Temperature resolution: 0.1°C
- ◆ Temperature accuracy: ±0.3°C
- ◆ Input voltage: 100-240VAC / 50-60Hz

## ■ Application:

Food, cosmetics, pharmaceuticals, coatings, inks, mining, construction, petrochemicals, polymers

## ■ Standard:

BS 3900 A7-1, ASTM D 4287, ISO 2884-1

## ■ Order info:

BEVS 1132	Intelligent Cone and Plate Viscometer (without cone)
BEVS 1132/5	Cone 1 with 5 oils (0-5P)
BEVS 1132/10	Cone 2 with 5 oils (0-10P)
BEVS 1132/20	Cone 3 with 5 oils (0.1-20P)
BEVS 1132/50	Cone 4 with 5 oils (0.1-50P)
BEVS 1132/100	Cone 5 with 5 oils (0.1-100P)

Cone 1:	0-5P	0-500cP
Cone 2:	0-10P	0-1000cP
Cone 3:	0.1-20P	10-2000cP
Cone 4:	0.1-50P	10-5000cP
Cone 5:	0.1-100P	10-10000cP