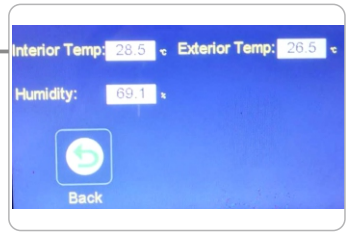


# Automatic Pull Off Adhesion Tester



- 👍 Real time display curve and parameter
- 👍 Set force hold and hold time
- 👍 Load up to 100MPa

Real time measure the temperature and humidity



USB port



5 kinds of dolly

## Introduction:

At present, cross cut method is used for qualitative evaluation of coating adhesion, but not quantitative testing. With quality control to improve and the development of new material, more and more users want to have the quantification on the adhesion and cohesion between coating and substrate, meanwhile, also need to monitor the influence change of adhesion of anti-corrosion coating on some outdoor concrete based coating, marine coating and bridge coating by the environmental temperature and humidity.

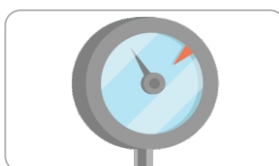
BEVS 2201 Automatic Pull Off Adhesion Tester adopts the full touch screen technology, It enables to test the adhesion of metal and other substrate and temperature and humidity on the surface to further evaluate the coating quality and lifetime.



## Features:



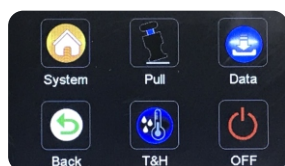
Various dolly



load up to 100Mpa



Real time display pull rate



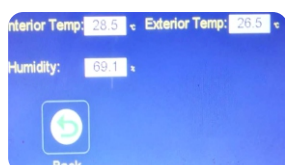
Color touch screen



Rechargeable battery



USB port



Real time monitor temp. and humidity



Set date and time



Set holding force and time

## ■ Application:

Coating adhesion measurement on metal, wood, concrete and other substrates.

## ■ Technical info:

Dolly dia.	10mm	14mm	20mm	50mm
Range	10-100MPa (1450-14504psi)	5-50MPa (725-7252psi)	2.5-25MPa (362-3626psi)	0.4-4MPa (58-580psi)
Rate	0.8-3MPa/s (116-435psi/s)	0.4-1.5MPa/s (58-217psi/s)	0.2-0.75MPa/s (29-108psi/s)	0.03-0.12MPa/s (4-17psi/s)

- ◆ Pull rate accuracy: 2.5%+0.3 seconds
- ◆ Pressure accuracy: 1% full scale
- ◆ Pressure resolution: 0.01mpa
- ◆ Unit: MPa, psi
- ◆ Display: Capacitive display touch screen

### ● Standard kit

10mm dolly	10
14mm dolly	10
20mm dolly	10
Temp.and humidity sensor	1
Charger	1
Glue	1 set
20mm cutter	1

### ● Power supply

- ◆ Built-in rechargeable battery
- ◆ Rechargeable battery: 12.6V, 2A
- ◆ Battery capacity: 20000mA/H
- ◆ Charging time: 2-3 hours

### ● Packing info

- ◆ Net weight: 3KG
- ◆ Dimension: L230 x W100mm x H160mm

## ■ Standard:

ASTM D4541,D7234, ISO 4624,ISO 16276-1, JIS K 5600 5-7

## ■ Order info:

BEVS 2201 Automatic Pull Off Adhesion Tester(Standard kit, other dollies are available)