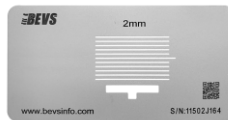


Hatch Gauge

Introduction:

BEVS 2203 series—Simple reticle is designed and manufactured in accordance with relevant standards. It has the characteristics of convenient use and fast scribe. It is widely used to determine the adhesion of plastic, wood ware and metal surface coatings. It is especially suitable for evaluating the adhesion of surface coatings such as mobile phones, tablet computers, and automobile rearview mirrors.



Features:

- ◆ Made of high-grade stainless steel
- ◆ "T" window makes it easier to observe the shape and position of the cut line, allowing it to be quickly positioned and tested for cross-cutting
- ◆ More appropriate grid length and number

Standard:

ISO 2409-2013, ASTM D3359

Order info:

Model	Cutting length(mm)	Cutting line	Spacing(mm)
BEVS 2203/1C	25	11	1
BEVS 2203/2C	35	11	2
BEVS 2203/3C	40	6	3

Standard kit: gauge + 3M Tape + Brush + Knife + Carry case

Model	Cutting length(mm)	Cutting line	Spacing(mm)
BEVS 2203/1S	25	11	1
BEVS 2203/2S	35	11	2
BEVS 2203/3S	40	6	3

Simple kit: gauge + carton only