

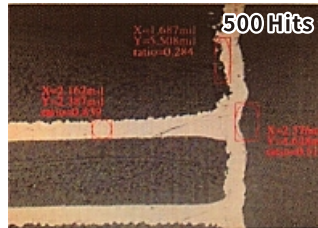


## CVD 金刚石涂层 Diamond Coating ( Diameter 直径: 0.7 ~ 7.0mm )

### 应用范围 Applications:

- 陶瓷填充基材 Ceramic Filler Laminate
- 硅铝合金 Silicon-Aluminum Alloy
- 石墨材料 Graphite
- 氧化锆 Ziconia

Arlon 92ML 陶瓷板



500 Hits Cross-Section HW Roughness: 1.69mil  
500孔后切片 孔粗:1.69mil

Apply CVD Coating 采用金刚石涂层



10,000 Hits Cross-Section HW Roughness: 0.55mil  
10,000孔后切片 孔粗:0.55mil